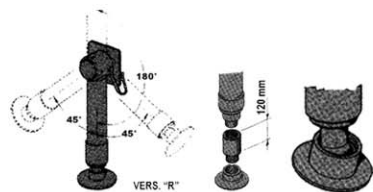
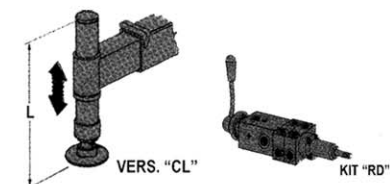
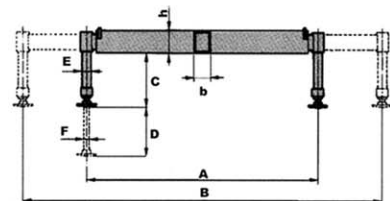


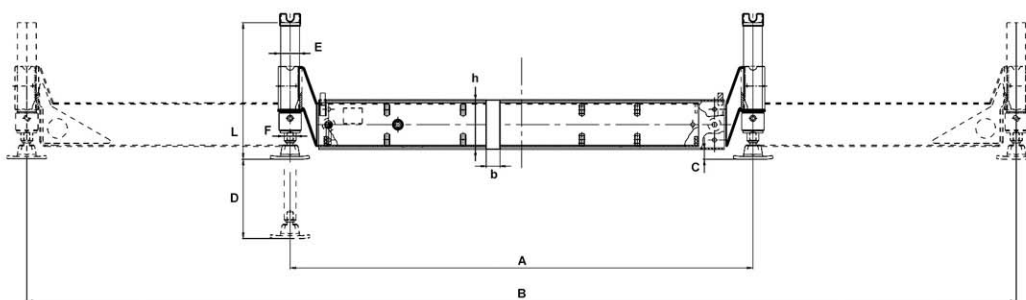
# STABILIZZATORI-STABILIZERS



## Traverse idrauliche - Hydraulic stabilizers

Tipo Type	Gru Crane Ton x m	R.max daN.m	Kg	A mm	B mm	hxb mm	C		D mm	E mm	F mm	L mm	1 2 3		
							Min	Max							
22 H 3.3 CL	6>21	6500	200	2100	3300	204x102	200	468	450	85	45	665			O
22 H3.3/S CL	6>21	6500	190	2100	3300	204x102	200	328	300	85	45	525			O
22 H 4.4 CL	6>21	6200	330	2100	4400	200x200	199	467	450	85	45	665	O	O	
35 H 3.3 CL	10>31	8150	255	2090	3291	201x120	276	644	550	95	55	840			O O
35 H 3.3/S CL	10>31	8150	240	2090	3291	201x120	276	494	400	95	55	690			O S
35 H 4.7 CL	10>31	8300	380	2100	4700	200x234	269	643	550	95	55	840			O S
35 H 4.7/S CL	10>31	8300	355	2100	4700	200x234	269	493	400	95	55	690			O S
40 H 5.0 CL	20>38	10500	430	2200	5000	250x232	232	605	550	95	55	840			S
40 H 5.0/S CL	20>38	10500	415	2200	5000	250x232	232	455	400	95	55	690			S
60 H 5.0 CL	30>50	12980	530	2200	5000	301x232	200	687	650	105	65	950			S
60 H 5.0/S CL	30>50	12980	512	2200	5000	301x232	200	557	500	105	65	820			S
70 H 5.9 CL	40>70	15500	820	2345	6045	325x320	230	634	600	125	90	880			S
70 H 5.9/S CL	40>70	15500	795	2345	6045	325x320	230	484	450	125	90	730			S
90 H 6.9 CL	50>80	15150	950	2310	6910	355x378	84	477	600	125	90	880			S
90 H 6.9/S CL	50>80	15150	925	2310	6910	355x378	84	327	450	125	90	730			S
100 H 7.9 CL	70>100	-	1360	2300	7900	330x445	510	-	600	125	90	-			S
100 H 7.9/S CL	70>100	-	1200	2300	7900	330x445	370	-	450	125	90	820			S
140 H 8.4 CL	90>140	-	1590	2350	8350	330x500	630	-	600	140	100	-			S
140 H 8.4/S CL	90>140	-	1570	2350	8350	330x500	480	-	450	140	100	-			S

O: optional S: standard



## Versioni speciali con aste ribaltate - Special versions with upset rams

Tipo Type	Gru Crane Ton x m	R.max daN.m	Kg	A mm	B mm	hxb mm	C		D mm	E mm	F mm	L mm	1 2 3		
							Min	Max							
40H 5.0 CL	20>38	10500	430	2340	5000	250x232	50	420	550	95	55	840			S
40H 5.0/S CL	20>38	10500	415	2340	5000	250x232	50	270	400	95	55	690			S
60H 5.0 CL	30>50	12980	530	2200	5000	301x232	0	422	650	105	65	950			S
60H 5.0/S CL	30>50	12980	512	2000	5000	301x232	0	292	500	105	65	820			S

O: optional S: standard

\* Le specifiche tecniche e le dimensioni riportate non sono impegnative, e Ferrari International 2 si riserva il diritto di apportare le modifiche che dovessero manifestarsi necessarie senza preavviso.  
\* The specifications and dimensions indicated are not binding; Ferrari International 2, therefore, reserves the right to make changes at any time.